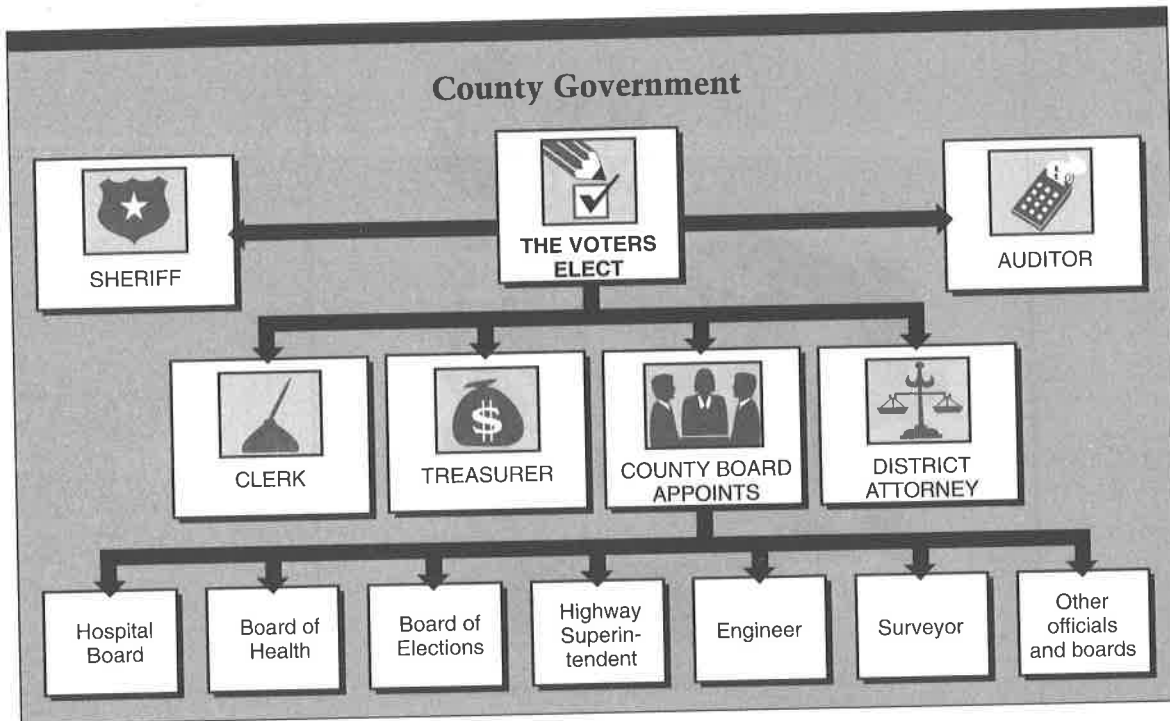


CHAPTER 9 LOCAL GOVERNMENT

SKILLS WORKSHEET

Interpreting an Organizational Chart

Study the following organizational chart. Then answer the questions that follow.



1. How are sheriffs chosen? _____
2. What group appoints the hospital board? _____
3. What group chooses the treasurer? _____
4. Is the county clerk appointed or elected? _____
5. Is the district attorney appointed or elected? _____
6. Which group holds the most power in county government? Why? _____

CHAPTER
9**LOCAL GOVERNMENT****CHALLENGE/ENRICHMENT
WORKSHEET****Researching Local Government**

In what kind of community do you live? Is it a town? a township? a village? a city? Whichever type of community it is, it has some form of local government. How is your local government organized? One way to show its organization is with an organizational chart. First read and answer the following questions. (You can find the answers in your school library and local library.) Then use the answers to draw an organizational chart of your local government.

1. What is the title of the highest executive official in your local government?

2. Was this official elected? If so, by whom? Or was the official appointed? If so, by whom?

3. What is this official's name? _____
4. What is the title of the major lawmaking body in your local government?

5. Were the people in this body elected to office? If so, by whom? Or were they appointed? If so, by whom?

6. What are the titles of the major departments of your local government?

7. Were the heads of these departments elected to their jobs? If so, by whom? Or were they appointed? If so, by whom?

Use the facts you have discovered to design an organizational chart. Draw your chart on a separate sheet of paper and title it "The Organization of My Local Government."